



Belsize Square NW3

Parkheath  
*Sold on Service*





## Belsize Square, NW3 £825,000 Leasehold

- An amazing apartment on the entire first floor
- Substantial one bedroom flat of 734 sq ft approx
- Set in imposing end of terrace period conversion
- Magnificent centre rose, ceiling coving, feature fireplace, sash windows
- Absolutely stunning 21ft open plan reception
- Sleek, contemporary kitchen
- Spacious 13 ft bedroom
- A fine blend of period features and contemporary touches
- Gorgeous bathroom with separate shower room
- Set in this quiet square in the heart of Belsize Park

Belsize Park/Hampstead  
208 Haverstock Hill  
NW3 2AG  
Sales 020 7431 1234  
Lettings 020 7431 3104  
[nw3@parkheath.com](mailto:nw3@parkheath.com)

South/West Hampstead  
192 West End Lane  
NW6 1SG  
Sales & Lettings  
Tel 020 7794 7111  
[192@parkheath.com](mailto:192@parkheath.com)

Kensal Rise  
54-56 Chamberlayne Rd  
NW10 3JH  
Tel 020 8960 4845  
[kensal@parkheath.com](mailto:kensal@parkheath.com)

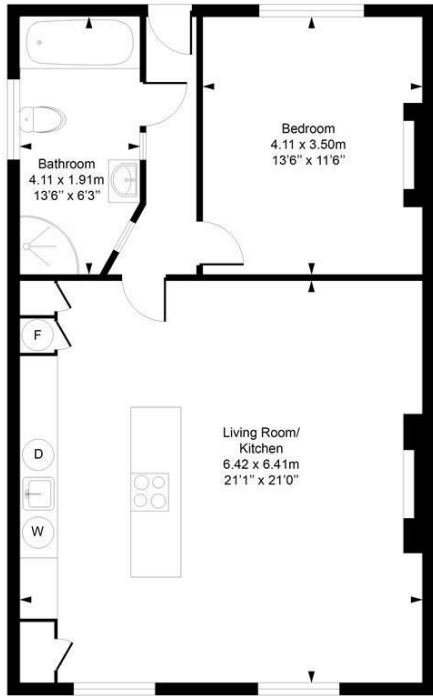
Property Management  
192 West End Lane  
NW6 1SG  
020 7433 6174  
[pm@parkheath.com](mailto:pm@parkheath.com)

**Parkheath**  
*Sold on Service*

**Camden Tax band E**

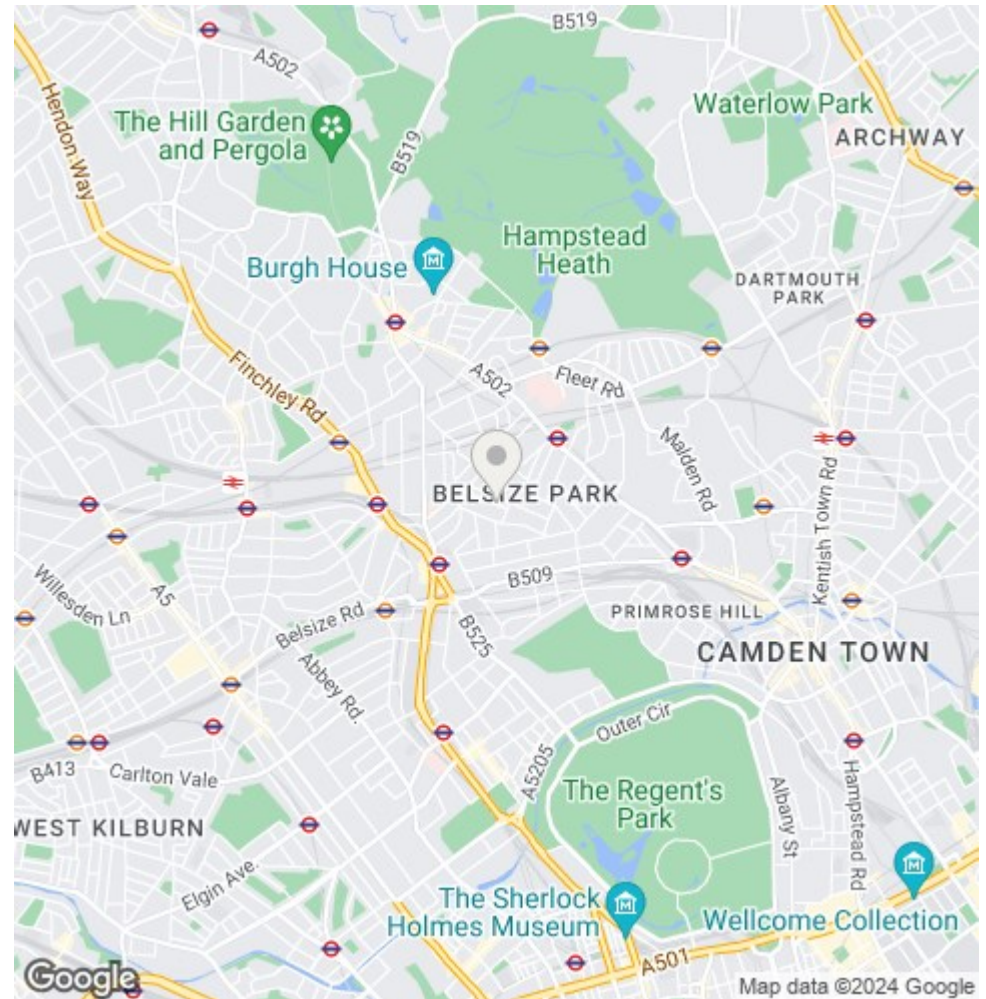
[www.parkheath.com](http://www.parkheath.com)

**Belsize Square**  
Approximate Gross Internal Area = 68.2 Sq m / 734 sq ft



**First Floor**

Measured in accordance with RICS guidelines. Every attempt is made to ensure accuracy  
However all measurements are approximate.  
The floor plan is illustrative purposes only and is not to scale  
ELLIE CLAIRE PHOTOGRAPHY LTD  
www.ellieclairephotography.com



The particulars do not constitute part of an offer or contract. The particulars, including text, photographs and plans, are for the guidance only of prospective purchasers/tenants and must not be relied upon as statements of fact. The descriptions provided therein represent the opinion of the author and whilst given in good faith should not be construed as statements of fact. Nothing in these particulars shall be deemed a statement that the property is in good condition or otherwise or that any services or facilities are in good working order. All measurements are approximate